

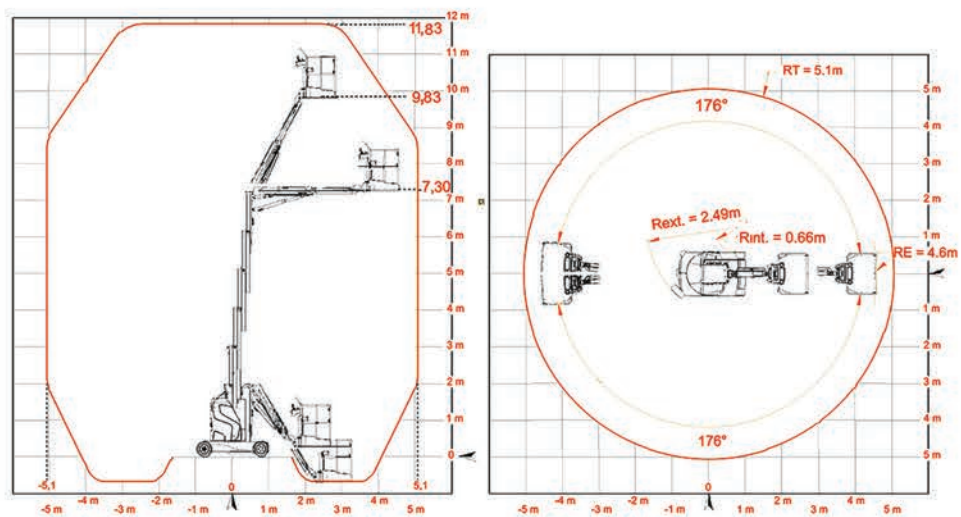
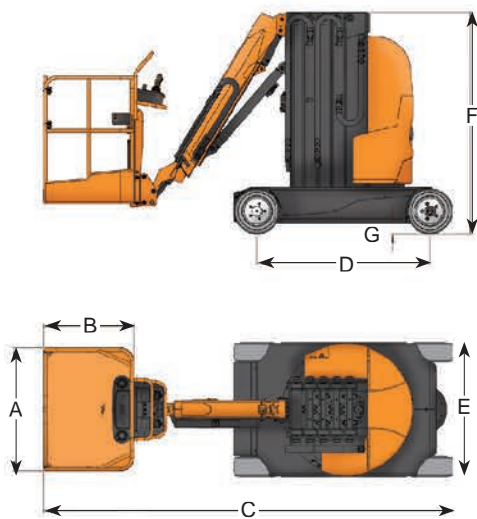
# ATN

NEW

## PIAF 12E

Mast-style boom lift





# PIAF 12E

## ADVANTAGES

- 5.10m horizontal outreach
- 30% gradeability
- Zero tailswing
- Rotation 2x176°
- A/C electric drive
- Electric and smooth operating system
- Designed and manufactured for heavy duty use
- Easy maintenance

## STANDARD FEATURES

- Non marking solid tires
- Battery 48V 260Ah
- Centralised battery filling
- On board charger H/F
- Access to platform through a gate
- Tilt indicator with buzzer
- Overload indicator
- Steel frame and fiberglass covers
- Flashing light
- Motion alarm
- Slings and lifting lugs
- On board colour LCD diagnostic console
- Hour meter
- Battery charge indicator

## OPTIONS

- Air line to platform
- 110 or 220V plug in the basket
- ACS (Anti-Crushing System)
- Special customer paint
- Gel battery with charger
- Food compatible oil
- Biodegradable oil



This product complies with applicable European regulations (EN 280).  
Due to our constant improvement policy, ATN reserves the right to make any modification without prior notice.



ZI. Guillaume Mon Amy 47400 FAUILLET - FRANCE  
Tel. : + 33 (0)553 798 320 - Fax : + 33 (0)553 880 107  
e-mail : contact@atnplatforms.com

	12 E
Working height	11,83 m (38 ft. 81 in.)
Platform height	9,83 m (32 ft. 25 in.)
Horizontal reach	5,1 m (16 ft. 73 in.)
Lift capacity / 2 persons / wind < 45 km/h	200 kg (441 lbs)
Turntable rotation	352°
<b>A</b> Platform width	1,1 m (3 ft. 61 in.)
<b>B</b> Platform length	0,8 m (2 ft. 63 in.)
<b>C</b> Length	3,66 m (12 ft. 01 in.)
<b>D</b> Wheelbase	1,55 m (5 ft. 09 in.)
<b>E</b> Width	1,2 m (3 ft. 94 in.)
<b>F</b> Height (stowed)	1,98 m (6 ft. 50 in.)
<b>G</b> Ground clearance centre	0,1 m (0 ft. 33 in.)

Turning radius - inside	0,66 m (2 ft. 17 in.)
Turning radius - outside	2,49 m (8 ft. 17 in.)
Gradeability (stowed)	30%
Maximum tilt value	2°
Drive speed (stowed)	6 km/h (3.73 mph)
Drive speed (raised)	0,8 km/h (0.50 mph)
Weight	4350 kg (9590 lbs.)
Max. ground bearing pressure	1569 kn/m <sup>2</sup>

